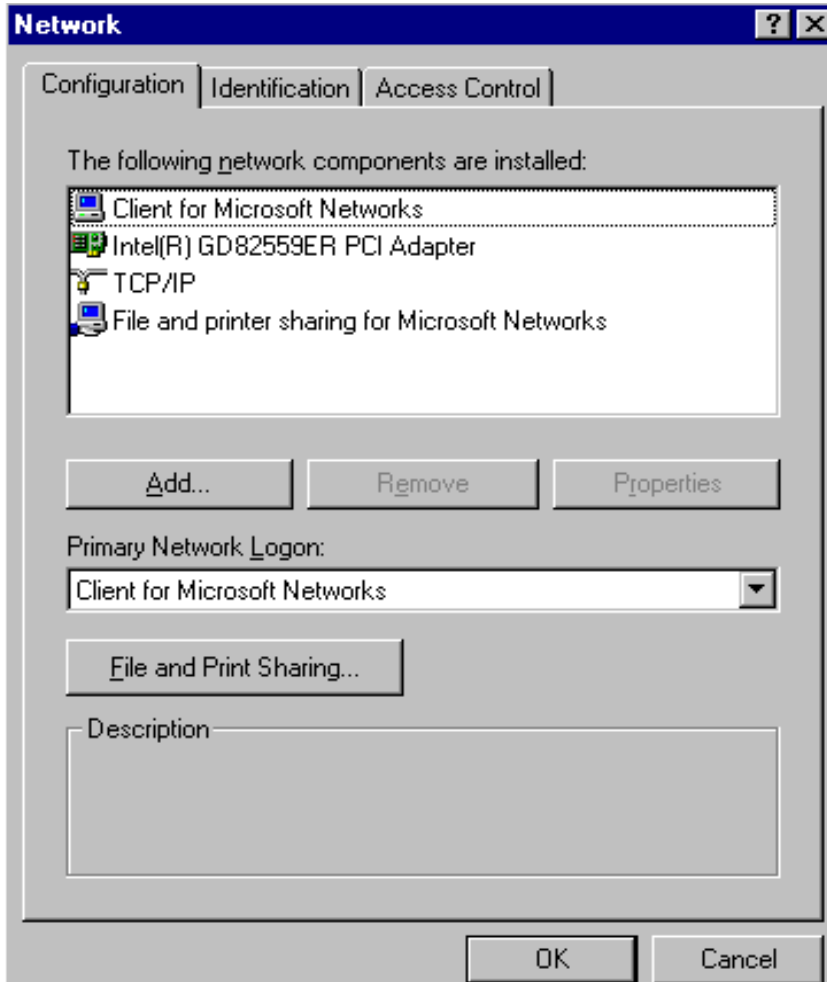


ect μ Dock Win98se Network Settings

Open the Control Panel Network icon



Note: All of the above network components must be installed.

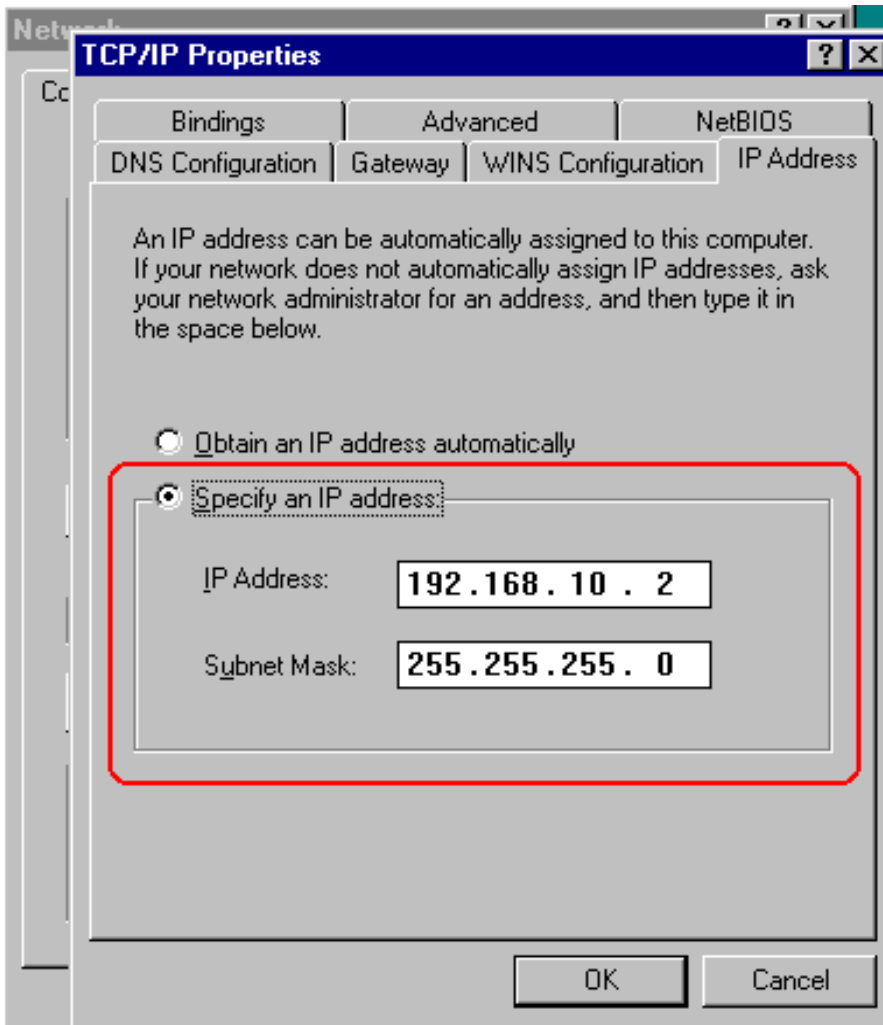
1. Client for Microsoft Networks
2. Intel® GD82559ER PCI Adapter
3. TCP/IP
4. File and printer sharing for Microsoft Networks

Select (highlight) the TCP/IP component and open the properties.

The **ect** μ Dock uses custom IP address settings. The following values must be manually input.

IP Address - 192.168.10.2

Subnet Mask - 255.255.255.0



Click OK.


The default gateway must also be defined. Open the TCP/IP Properties Gateway tab.
Place the following into the New gateway box: 192.168.10.100 , then click on the Add button. Click OK.



Network Identification

Network [?] [X]

Configuration | **Identification** | Access Control

 Windows uses the following information to identify your computer on the network. Please type a name for this computer, the workgroup it will appear in, and a short description of the computer.

Computer name:

Workgroup:

Computer Description:

this value must match the host computer workgroup name

OK Cancel

Client for Microsoft Networks Properties

