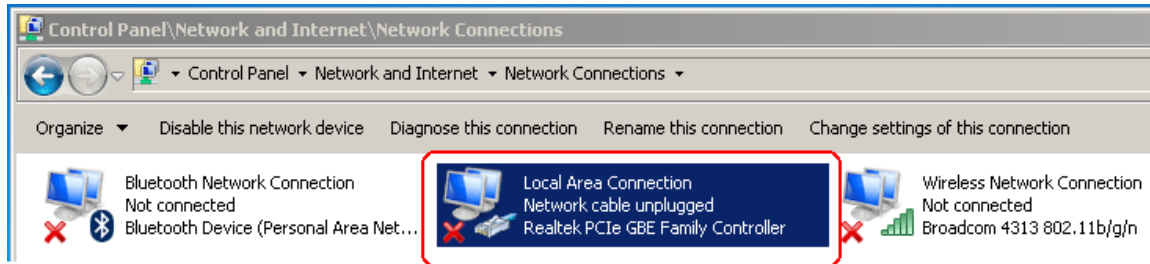


ect μ Dock Windows 7 Network Settings

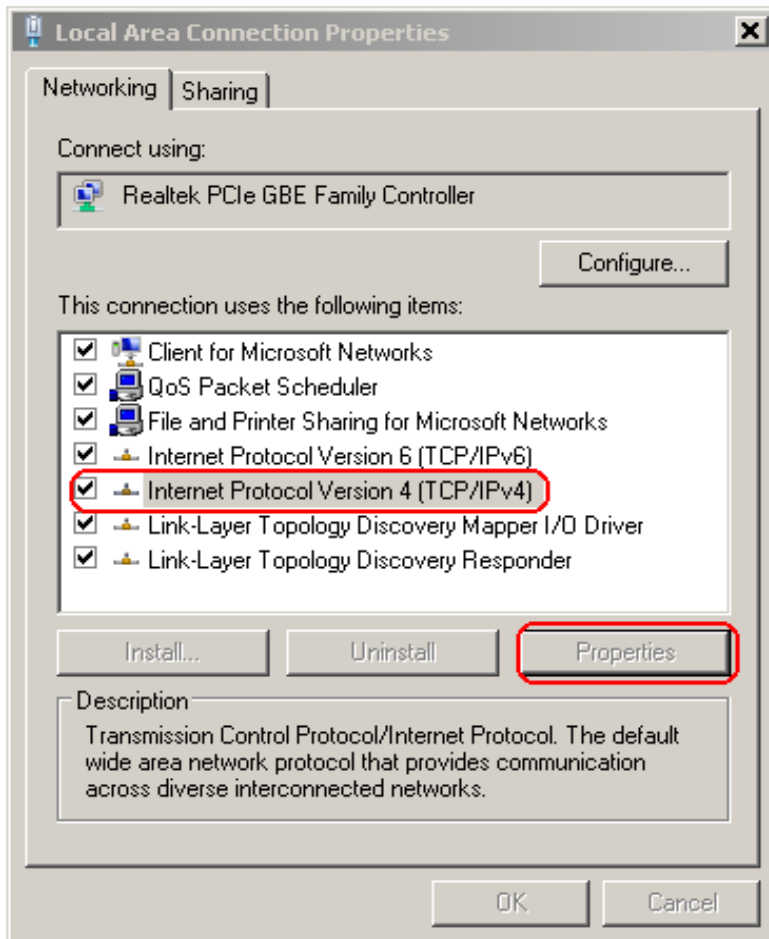
This document is intended to show the user the general Network settings for the laptop in an **ect μ Dock** system. The actual hardware may not be the same; however, the settings used by the hardware will be the same.

The **ect μ Dock** uses custom Network settings.

The first step to check these settings is to open the Control Panel\Network and Internet\Network Connections.



Locate the Local Area Connection. Right click on the icon and open the properties. Select (highlight) the Internet Protocol Version 4(TCP/IPv4) connection. Open the properties of this connection.

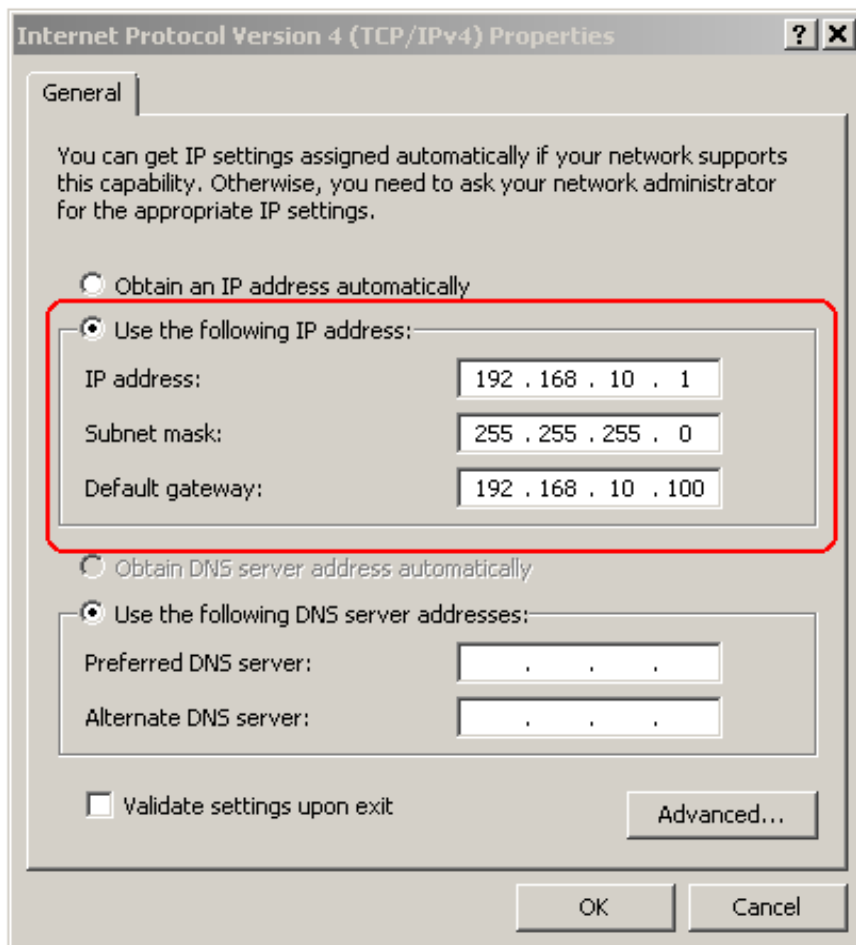


The laptop **CAN NOT** use the “Obtain an IP address automatically”. It must use the following values or the **ect μ** Dock will not communicate with the Laptop.

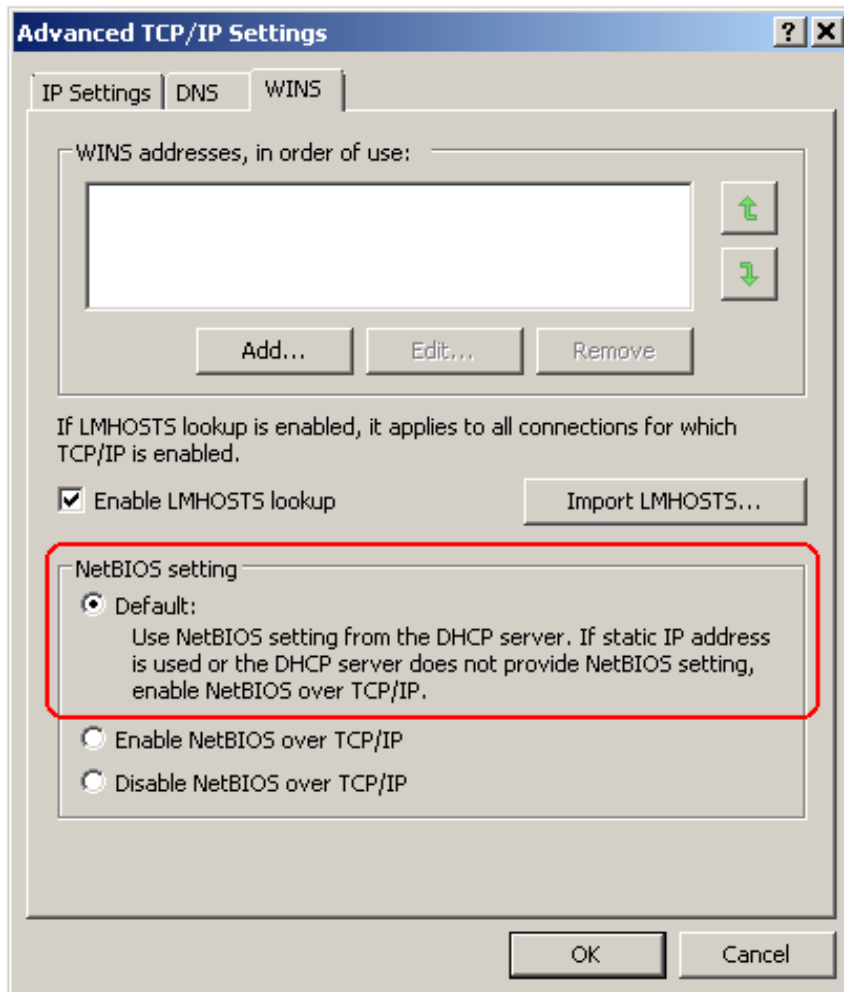
IP address - 192.168.10.1

Subnet mask - 255.255.255.0

Default gateway - 192.168.10.100



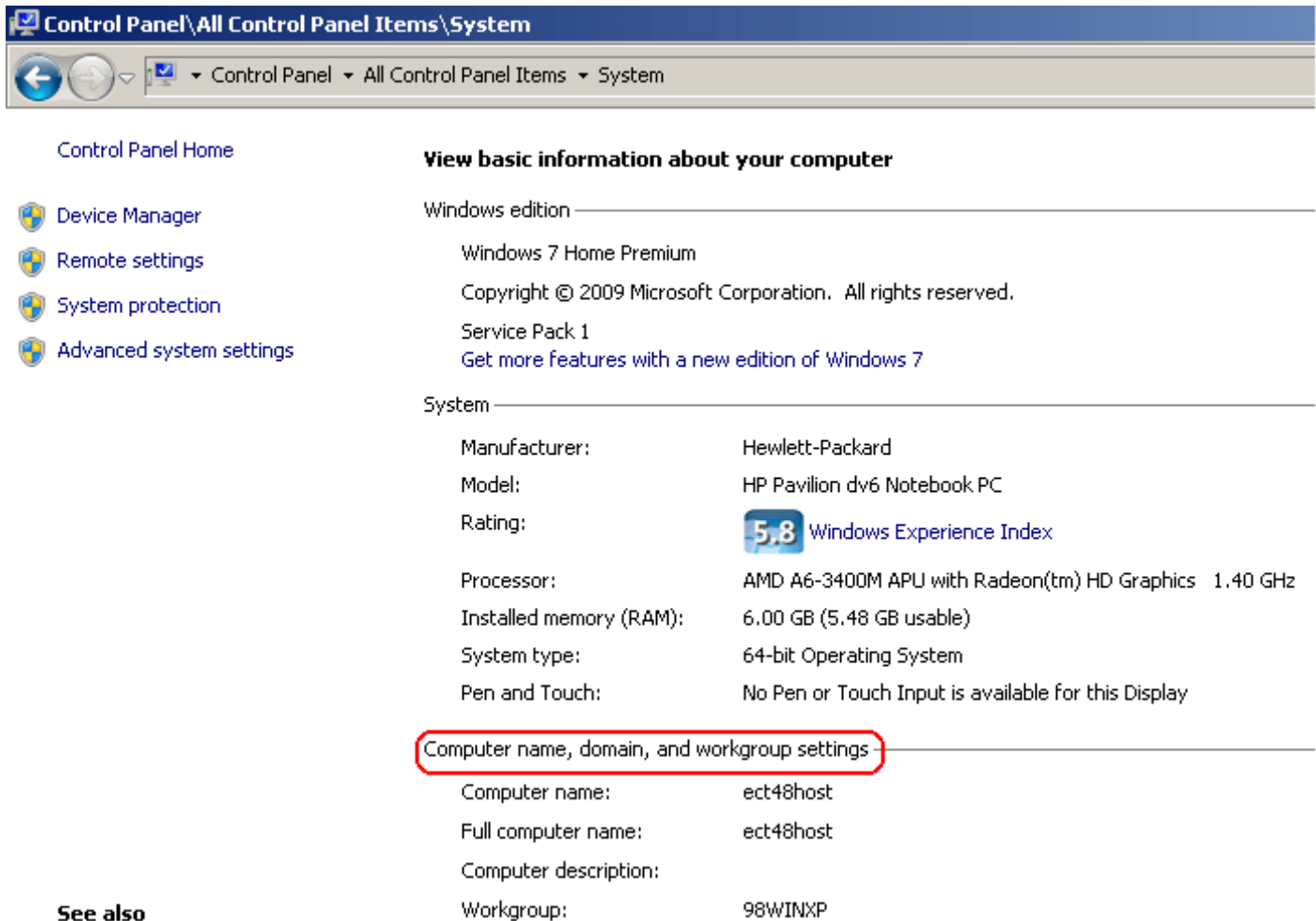
Click on the Advanced button to open the Advanced settings.
In the Advanced TCP/IP Settings, select the Default NetBIOS setting



Save these Local Area Connection settings.

The Computer name and Workgroup are also Important. This can be checked by opening the system properties.

Open the Control Panel\All Control Panel Items\System and make sure the following are correct:
Computer name = ect48host
Workgroup = 98WINXP



The screenshot shows the Windows Control Panel window titled "Control Panel\All Control Panel Items\System". The breadcrumb path is "Control Panel > All Control Panel Items > System". On the left, there are links for "Control Panel Home", "Device Manager", "Remote settings", "System protection", and "Advanced system settings". The main content area is titled "View basic information about your computer" and is divided into two sections: "Windows edition" and "System".

View basic information about your computer

Windows edition

Windows 7 Home Premium

Copyright © 2009 Microsoft Corporation. All rights reserved.

Service Pack 1

[Get more features with a new edition of Windows 7](#)

System

Manufacturer:	Hewlett-Packard
Model:	HP Pavilion dv6 Notebook PC
Rating:	5.8 Windows Experience Index
Processor:	AMD A6-3400M APU with Radeon(tm) HD Graphics 1.40 GHz
Installed memory (RAM):	6.00 GB (5.48 GB usable)
System type:	64-bit Operating System
Pen and Touch:	No Pen or Touch Input is available for this Display

Computer name, domain, and workgroup settings

Computer name:	ect48host
Full computer name:	ect48host
Computer description:	
Workgroup:	98WINXP

See also