

## ect $\mu$ Dock Network Settings

These steps must be followed in order for the ect  $\mu$  Dock to communicate with the laptop computer:

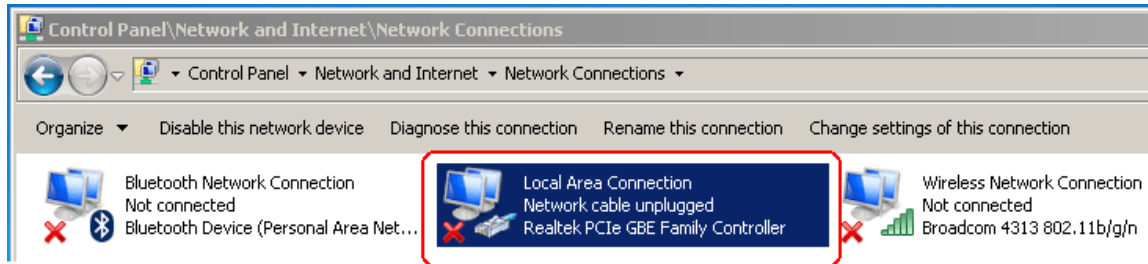
- 1). All ect 48 folders **must** have sharing enabled.  
Any other folder may have sharing enabled as needed.
- 2). Both computers **must** be members of the same WorkGroup.  
In this guide it is the "98winXP" workgroup.
- 3). The ect  $\mu$  Dock **must** have the computer name "ectslave". The laptop must have the name "ect48host".
- 4). The ethernet cable must be a cross-over cable. A standard CAT 5 ethernet cable will not work.

## ect μ Dock Windows 7 Network Settings

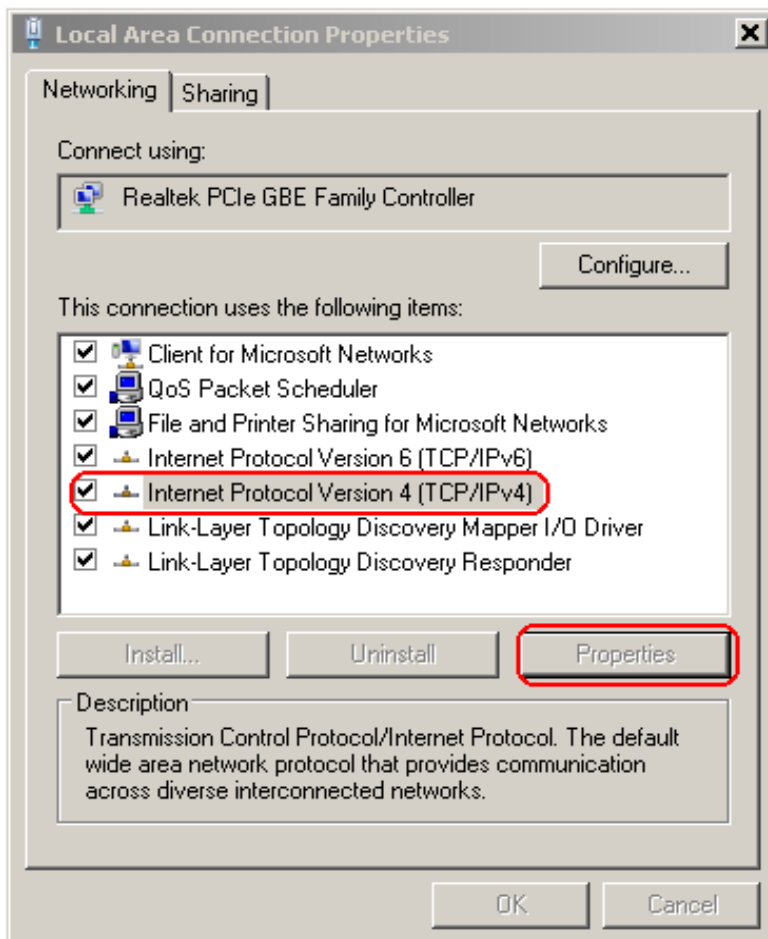
This document is intended to show the user the general Network settings for the laptop in an **ect μ** Dock system. The actual hardware may not be the same; however, the settings used by the hardware will be the same.

The **ect μ** Dock uses custom Network settings.

The first step to check these settings is to open the Control Panel\Network and Internet\Network Connections.



Locate the Local Area Connection. Right click on the icon and open the properties. Select (highlight) the Internet Protocol Version 4(TCP/IPv4) connection. Open the properties of this connection.

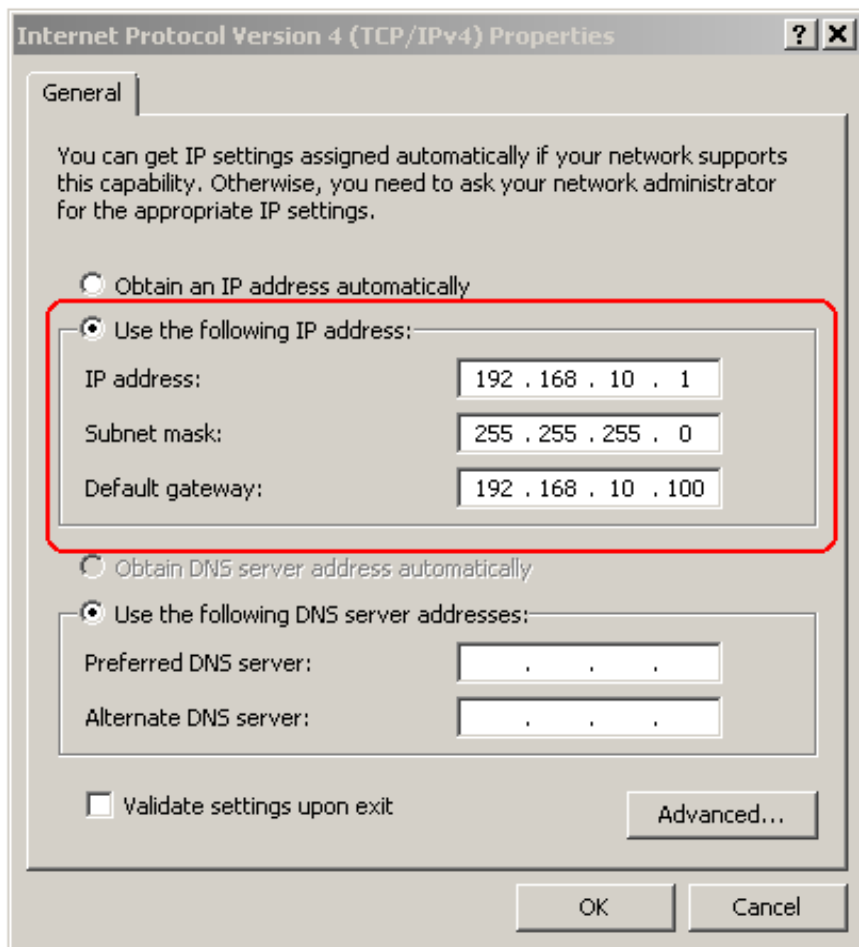


The laptop **CAN NOT** use the “Obtain an IP address automatically”. It must use the following values or the **ect μ** Dock will not communicate with the Laptop.

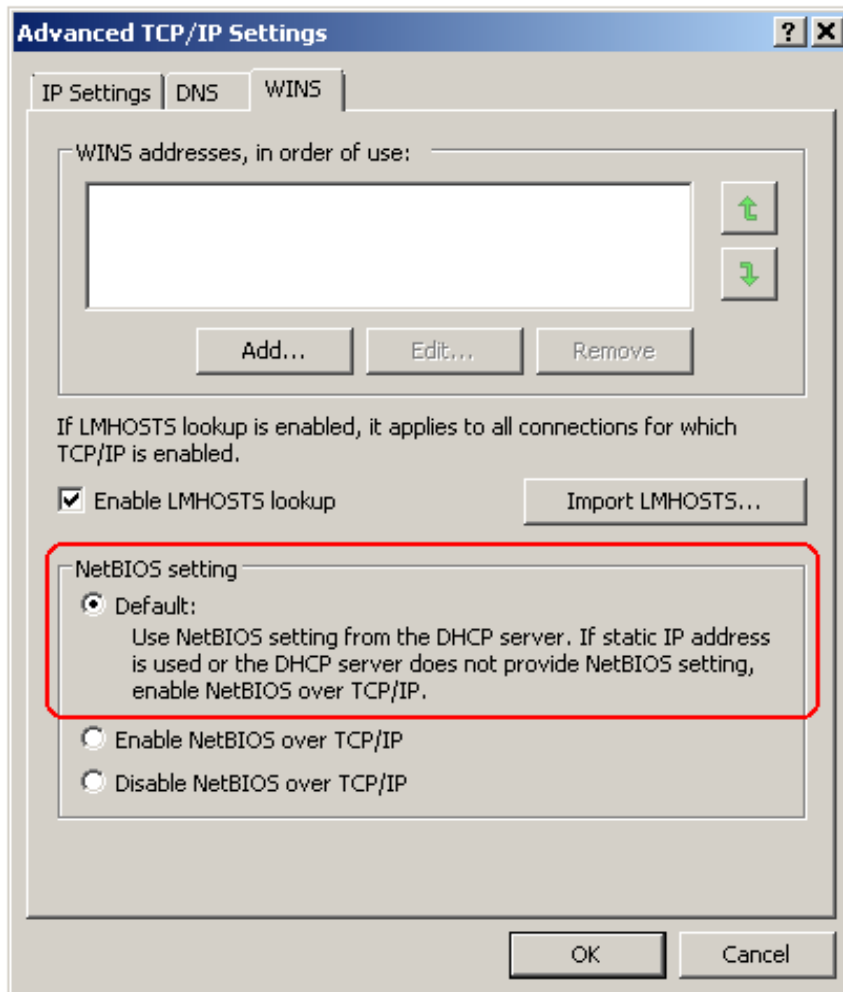
IP address - 192.168.10.1

Subnet mask - 255.255.255.0

Default gateway - 192.168.10.100



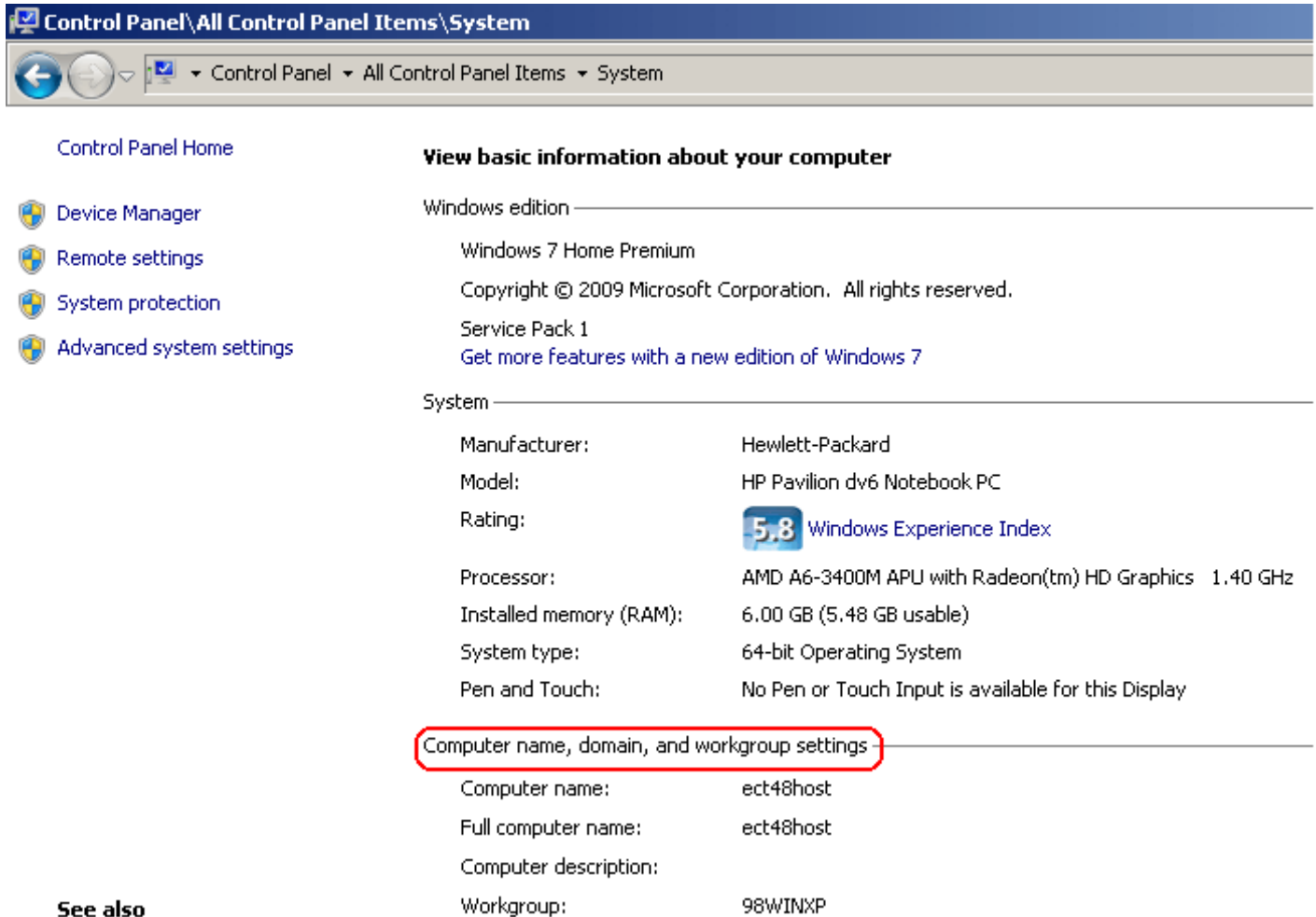
Click on the Advanced button to open the Advanced settings.  
In the Advanced TCP/IP Settings, select the Default NetBIOS setting



Save these Local Area Connection settings.

The Computer name and Workgroup are also Important. This can be checked by opening the system properties.

Open the Control Panel\All Control Panel Items\System and make sure the following are correct:  
Computer name = ect48host  
Workgroup = 98WINXP



The screenshot shows the Windows Control Panel window titled "Control Panel\All Control Panel Items\System". The breadcrumb path is "Control Panel > All Control Panel Items > System". On the left, there are links for "Control Panel Home", "Device Manager", "Remote settings", "System protection", and "Advanced system settings". The main content area is titled "View basic information about your computer" and is divided into two sections: "Windows edition" and "System".

**View basic information about your computer**

Windows edition

Windows 7 Home Premium

Copyright © 2009 Microsoft Corporation. All rights reserved.

Service Pack 1

[Get more features with a new edition of Windows 7](#)

System

Manufacturer:	Hewlett-Packard
Model:	HP Pavilion dv6 Notebook PC
Rating:	<b>5.8</b> Windows Experience Index
Processor:	AMD A6-3400M APU with Radeon(tm) HD Graphics 1.40 GHz
Installed memory (RAM):	6.00 GB (5.48 GB usable)
System type:	64-bit Operating System
Pen and Touch:	No Pen or Touch Input is available for this Display

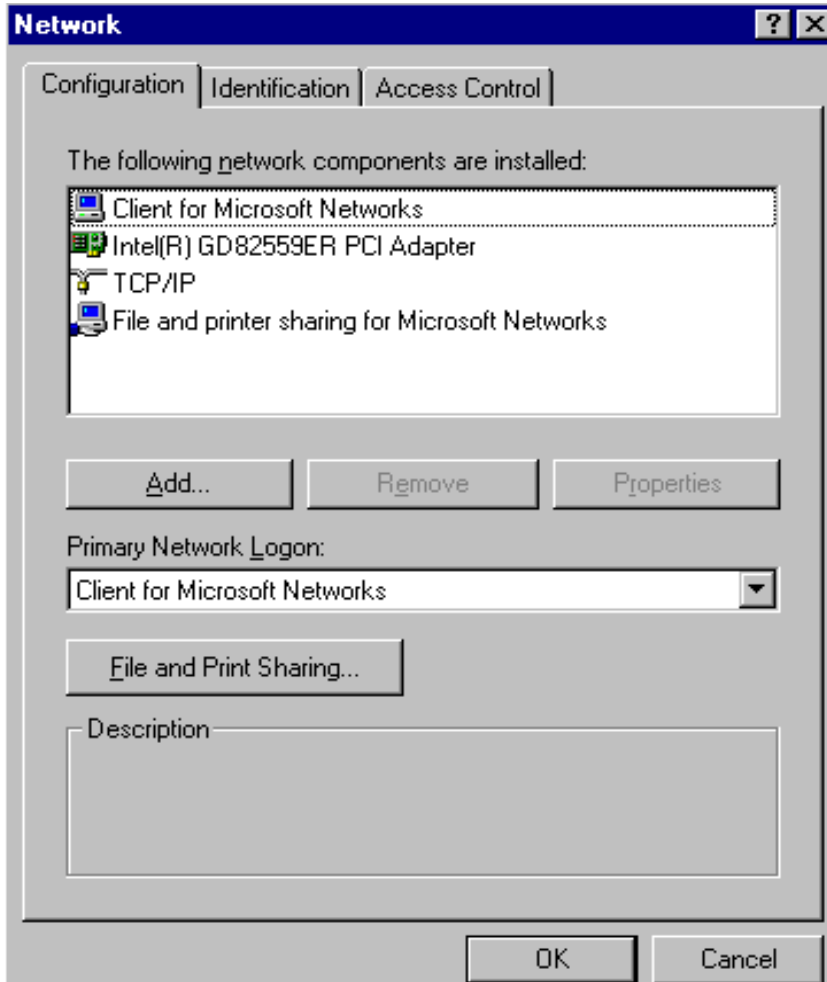
**Computer name, domain, and workgroup settings**

Computer name:	ect48host
Full computer name:	ect48host
Computer description:	
Workgroup:	98WINXP

**See also**

## ect μ Dock Win98se Network Settings

Open the Control Panel Network icon



Note: All of the above network components must be installed.

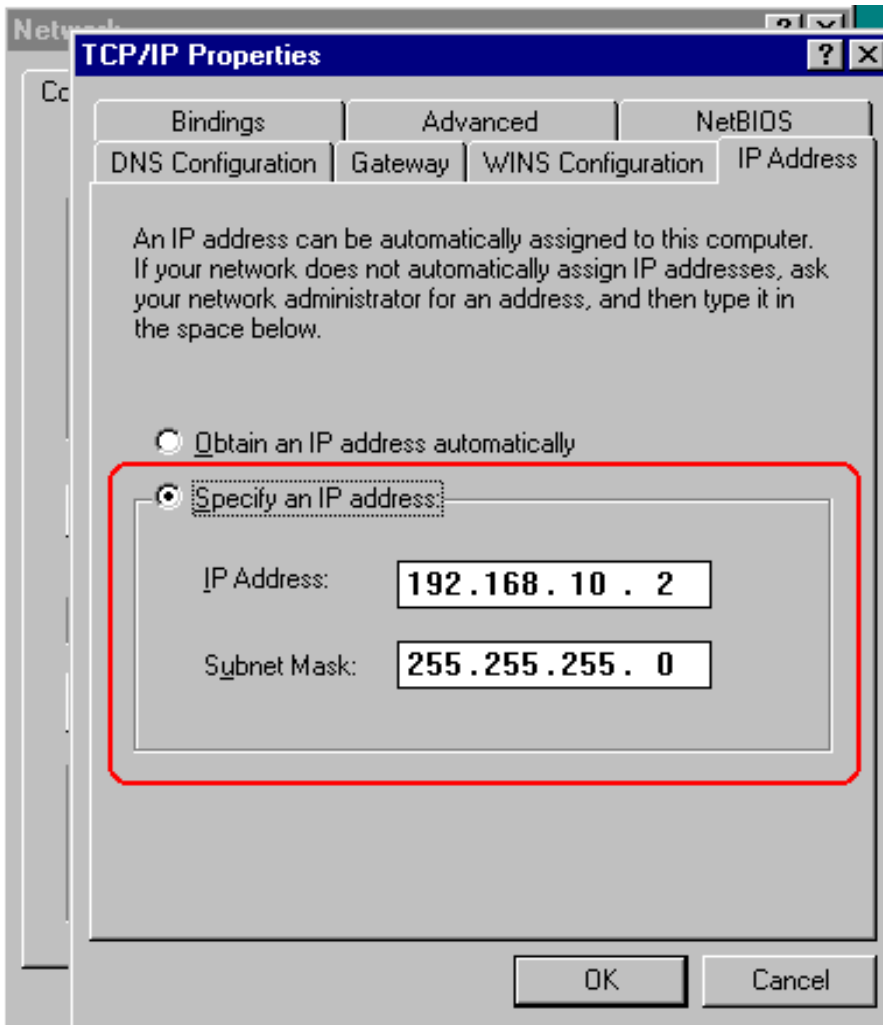
1. Client for Microsoft Networks
2. Intel® GD82559ER PCI Adapter
3. TCP/IP
4. File and printer sharing for Microsoft Networks

Select (highlight) the TCP/IP component and open the properties.

The **ect**  $\mu$  Dock uses custom IP address settings. The following values must be manually input.

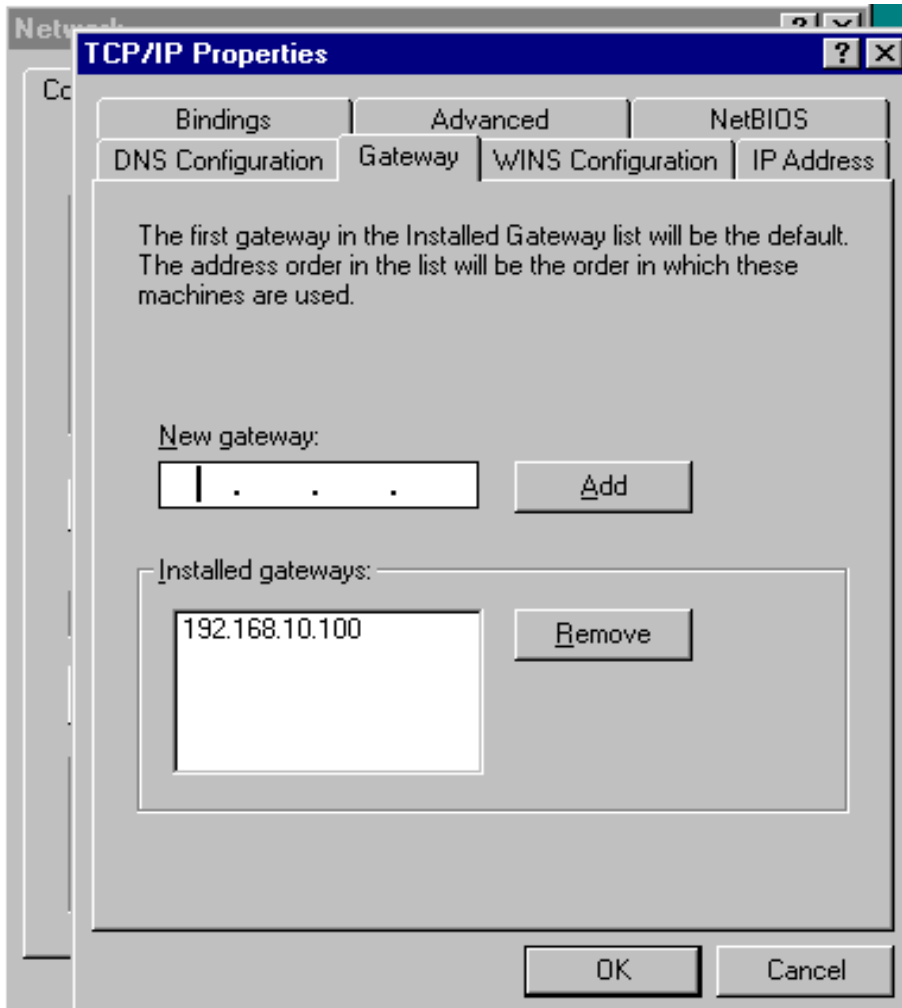
IP Address - 192.168.10.2

Subnet Mask - 255.255.255.0



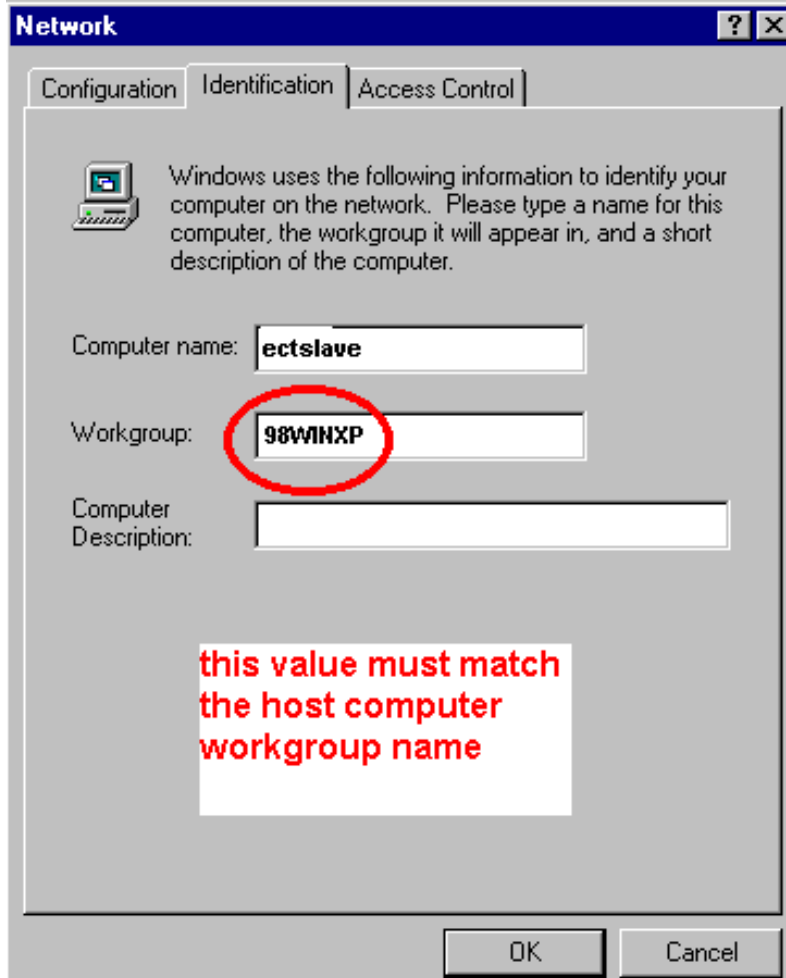
Click OK.

The default gateway must also be defined. Open the TCP/IP Properties Gateway tab.  
Place the following into the New gateway box: 192.168.10.100 , then click on the Add button. Click OK.






## Network Identification



**Network** [?] [X]

Configuration | **Identification** | Access Control

 Windows uses the following information to identify your computer on the network. Please type a name for this computer, the workgroup it will appear in, and a short description of the computer.

Computer name:

Workgroup:

Computer Description:

**this value must match the host computer workgroup name**

OK Cancel

## Client for Microsoft Networks Properties

